

For more information, please visit our website  
[www.midea.com](http://www.midea.com)



Midea Group All Right Reserved.  
CS174I-BP11M

# User's Manual

## Kummefryser/Frysbox

Best.nr. HN 9839

Model FB100H

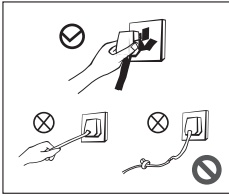
Before using your product, please read this manual carefully and keep it for future reference.



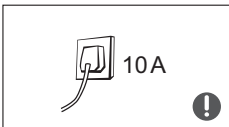


## Sikkerhedsforanstaltninger

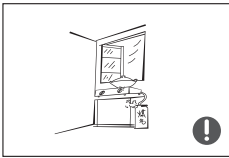
### ► Advarsler ifm elektricitet



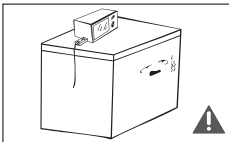
- Do not pull the power cord when pulling the power plug of the freezer. Please firmly grasp the plug and pull out it from the socket directly.
- Do not damage the power cord under any condition so as to ensure safety use, do not use when the power cord is damaged or the plug is worn.
- Worn or damaged power cord shall be replaced in manufacture-authorized maintenance stations.



- Please use a dedicated three-hole power socket which is 10A or more and the power socket shall not be shared with other electrical appliances.
- The power cord should be firmly contacted with the socket or else fires might be caused. Please ensure that the grounding electrode of the power socket is equipped with a reliable grounding line.

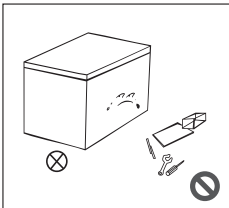


- The refrigerator adopts 220~240V/50Hz AC power, voltage fluctuations over the range of 220~240V±10% will cause malfunction or even damage, so a 750 W automatic voltage regulator must be installed in concert with the AC power.
- Please turn off the valve of the leaking gas and then open the doors and windows in case of leakage of gas and other flammable gases. Do not unplug the refrigerator and other electrical appliances considering that spark may cause a fire.

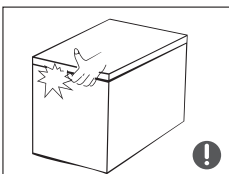


- To ensure safety, it is not recommended that to place regulators, rice cookers, microwave ovens and other appliances at the top of the freezer, those recommended by the manufacture are not included. Do not use electrical appliances in the food pantry.

### ► Advarsler ved almindelig brug

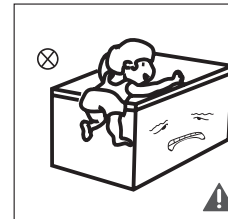


- Authorized demolition or renovation of the refrigerator is not prohibited. It is forbidden to damage the refrigerant lines and the repair and maintenance of the refrigerator must be carried out by professionals.
- Damaged power cord must be replaced by the manufacturer, its maintenance department or related professionals in order to avoid danger.

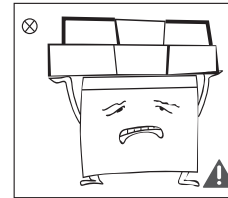


- The surrounding of the appliances around or the embedded structure shall not be obstructed while good ventilation shall be maintained.
- The gaps between freezer doors and between doors and freezer body are small, be noted not to put your hand in these areas to prevent squeezing the finger. Please be gentle when switching off the freezer door to avoid falling articles.
- Do not pick foods or containers in the freezing chamber when the refrigerator is running, especially metal containers in order to avoid frostbite.

## Sikkerhedsforanstaltninger



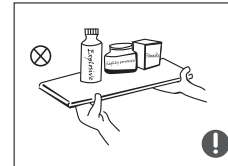
- Kummefryseren er ikke et legetøj og børn bør ikke lege på den.
- Kummefryseren må ikke placeres i rum, hvor den udsættes for fugt, da dette kan medføre dysfunktion og/eller elektrisk kortslutning.



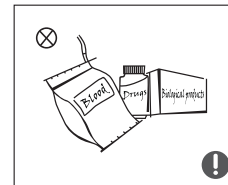
- Undgå at placere tunge objekter ovenpå fryseren.

- Tag stikket uaf kontakten ved strømafbrydelse. Tilslut ikke fryseren igen, før der er gået minimum fem minutter, da det kan medføre opstartsproblemer.

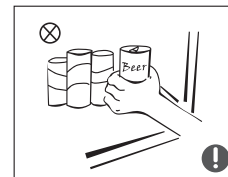
### ► Placering af varer i kummefryseren



- Do not put flammable, explosive, volatile and highly corrosive items in the freezer to prevent damages to the product or fire accidents.
- Placér ikke brændbare objekter i, eller i nærheden af, fryseren.



- This product is household freezers and shall be only suitable for the storage of foods. According to national standards, household freezers shall not be used for other purposes, such as storage of blood, drugs or biological products.



- Do not place items such as bottled or sealed container of fluid such as bottled beers and beverages in the freezer to prevent bursts and other losses.

### ► Warnings related to disposal

The freezer's R600a refrigerant and cyclopentane foam materials are combustible materials and discarded refrigerators should be isolated from fire sources and can not be burned. Please transfer the freezer to qualified professional recycling companies for processing to avoid damages to the environment or other hazards.

- Please remove the door of the freezer and shelves which shall be properly placed to avoid accidents of children entering and playing in the freezer.





